

Product Code

F01455

MARINE DIGITAL VIDEO PANEL MEET



Reference

EAN

1455

8424299014555

Description.

Description

The MARINE MEET panel is FERMAX's vandal-proof door entry and video door entry panel.

Made of 316L stainless steel, it is 3mm thick. It is a very resistant plate due to its high quality, both in materials and in production and assembly processes.

Its compact and sealed design guarantees protection against external agents IP65 and a degree of resistance against impacts of IK09.

2MP HD CAMERA

The camera has a high definition image, giving it excellent video quality. The camera is equipped with LED lighting for low light conditions. Additional RTSP IP video output.

ADAPTED FOR EVERYONE

- The camera allows a viewing angle of 130°H and 70°. This facilitates the installation and use of the plate in the case of visitors in a wheelchair.
- With Braille engraving that allows the call key to be identified by means of an engraving on the surface of the plate.

ACCESS CONTROL

The proximity reader with MIFARE technology allows the door to be opened by means of a code on the panel or by sending the code to an external access controller that validates the access.

ADVANCED DISPLAY

- Welcome with a logo or useful information on the screen for the visitor.
- We can search for the name or apartment we want to call thanks to the electronic directory.
- Compatible with Lift Control function.

FEATURES

- 3mm 316L Stainless steel profile
- Backlighting metal keys and braille engraving
- IP65 weatherproof and IK09 resistance
- Hands Free Audio Communication
- 2 Mpx High-Definition Colour Camera
- 4.3" Colour TFT Screen
- Electronic Directory with 1 customised image
- Face recognition (up 50.000 faces)
- RTSP Camera Video Streaming
- Wiegand input/output for third party integration
- Access Control Integrated for 100.000 Cards
- Fire alarm with door unblocking and message to guard unit and MMS.
- Door forced and door left open alarms.
- Voice Synthesizer
- Available in 12 languages
- PoE Powered

FUNCTIONS

CALL TENANT

Visitors can call the desired tenant from the General Entry or the Block Entry.

ELECTRONIC DIRECTORY AND SEARCH

It is possible to store the name of the residents and select them in the electronic directory by scrolling with the arrow keys or selecting the character to search.

CALL TO GUARD UNIT

If the visitor or tenant needs to be assisted, they can call the main Guard Unit by entering pressing the "Bell Button" or dialing the number 9901. This call can be made from both General Entry and Block Entry. Up to 98 different guard units can be called (9901...9998).

ACCESS PIN CODE

It is possible to define up to 8 access codes (pin) to open the door. Codes can have 4 to 6 digits long.

GUEST CODE

Using the GUEST CODE Module (ref.1494) it is possible to dial a code and be sent to a third-party access control system that generates temporary codes for temporary visitors.

FACE RECOGNITION Tenants can be identified in the front of the panel, and then the door been opened by means of pressing twice A key or selecting the function from the menu. Up to 50.000 faces.

PROXIMITY ACCESS CONTROL

The panel includes a Mifare card reader that controls up to 100.000 cards. It is possible to manage cards by means of the MEET Management Software. In addition, the panel can be connected to third party access control units through Wiegand 26 protocol.

IP CAMERAS

It is possible to configure up to 4 IP cameras that can be used as an auxiliary camera from all the monitors installed in the same block. These cameras can be used for tracking visitors through the corridors or common areas in the condominium.

ADDITIONAL RELAYS

It is possible to add up to 4 additional relays. (One Module Ref.1491 is required). Tenants can then open additional doors (garage, corridors, etc.), when called from any panel in their block or main entrance.

VIDEO STREAMING

RTSP video stream can be constantly sent to NVR or third-party system so that the panel camera can be used as a regular surveillance CCTV camera. Video stream and face recognition cannot work simultaneously.

TAMPER

The panel is protected against vandalism thanks to the tamper alarm switch, so in case the panel is removed from its flush box a warning message will be sent to concierge and/or MEET Management Software.

FIRE ALARM

Working with a fire detection system, when activated, an acoustic alarm is triggered in all the panels in the block.

Technical Details

System:

- CPU: Quad-core Cortex™-A7 1.5GHz
- GPU: Mali400MP2
- FLASH: 8GB
- SDRAM: 512MB DDR3L

Screen:

- 4.3" Color TFT
- Resolution 480 x 272 pixel
- View angle: 110° H, 90° V
- Contrast: 400/1
- Brightness: 200cd/m2

Audio Features:

- G.711 codec
- Audio OLR> 15dB

Camera:

- 1/3" CMOS Color
- Horizontal 130°, Vertical 70°
- 2 Mega Pixels
- Minimum Illumination 0.5 LUX. Automatic white led activation
- AWB

Built-in MIFARE Classic reader:

- 4-bytes cards only (see ref. 52740/52750)

Power Consumption:

- On standby: 250 mA
- Working: 500 mA
- Heater enabled: additional 170mA

Working voltage:

- PoE
- 12 Vdc

Connectivity:

- Ethernet RJ-45 Connector
- RS485 connection port for lift control and aux relays module.
- Secondary access control reader connection (Wiegand 26)
- Built in web server for configuration and remote management

Working Environment:

- Temperature: -25°C to +70°C
- Humidity: 10 – 90% (non-condensing)
- IP 65
- IK 09

Details.

Product measurements (height x width x depth) mm	Weight (kg)	Packaging measurements (height x width x depth) cm	Video Door Entry system Technologie
410 x 155 x 49	2.5	46,8x10x21	MEET

Access Control Technology

PROXIMIDAD

Manuals

- [970139Ed Man Inst APP MEET V11_24.pdf](#)
- [970139Id Man Inst APP MEET V11_24.pdf](#)
- [970189c_Guia_rap_Instalacion_Placa_MARINE_V06_24.pdf](#)
- [970190Ad Manual instalador Placa MARINE MEET V07_22.pdf](#)
- [970190Ed_Manual_instalador_Placa_MARINE_MEET_V07_22.pdf](#)
- [970190Fd Manual instalador Placa MARINE MEET V07_22.pdf](#)
- [970190Id Manual instalador Placa MARINE MEET V07_22.pdf](#)
- [970190Pd Manual instalador Placa MARINE MEET V02_24.pdf](#)
- [970190Rd Manual instalador Placa MARINE MEET V07_22.pdf](#)
- [970190Td Manual instalador Placa MARINE MEET V07_22.pdf](#)

Declaration of conformity

- [DOCF01455EN.pdf](#)

Accessories



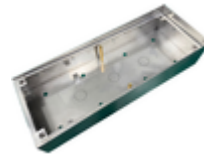
F01456

MARINE DIRECTORY PANEL MEET



F01459

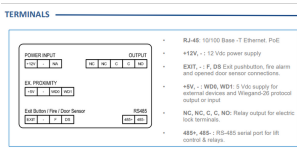
MARINE PANEL FLUSH BOX MEET



F01458

MARINE PANEL SURFACE BOX MEET

Other images



Video

- <https://www.youtube.com/playlist?list=PLf1YNFmssC36Bny27XXrgeUpOEATFOYo7>